

# TECHNICAL SERVICE BULLETIN

NO. 75-F-2



# Triumph

March, 1975

SUBJECT:

FRONT SUSPENSION BLOCKS

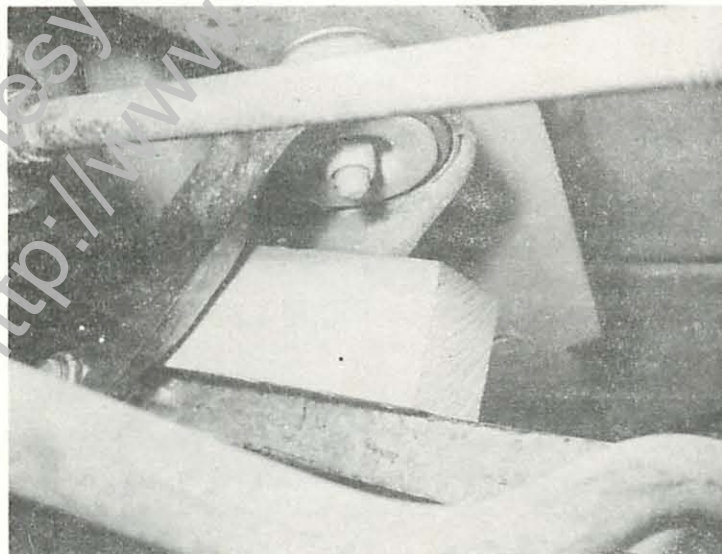
MODELS:

TR7

In order to prevent front panel damage to the TR7 during loading and unloading of transporters, two wooden blocks have been inserted at the factory between the front suspension lower arms and within the channel section at the sub-frame rear attachment points. (See Diagram).

It is essential that these blocks are removed upon receipt of the vehicles at your dealership. This is easily achieved by raising the front of the vehicle on a jack, whereupon the blocks can be removed by hand.

**SPECIAL NOTE:-** It is imperative that the vehicles are not driven in excess of 10 miles per hour prior to removal of these wooden blocks.



RB